

# 1408 Jenkins

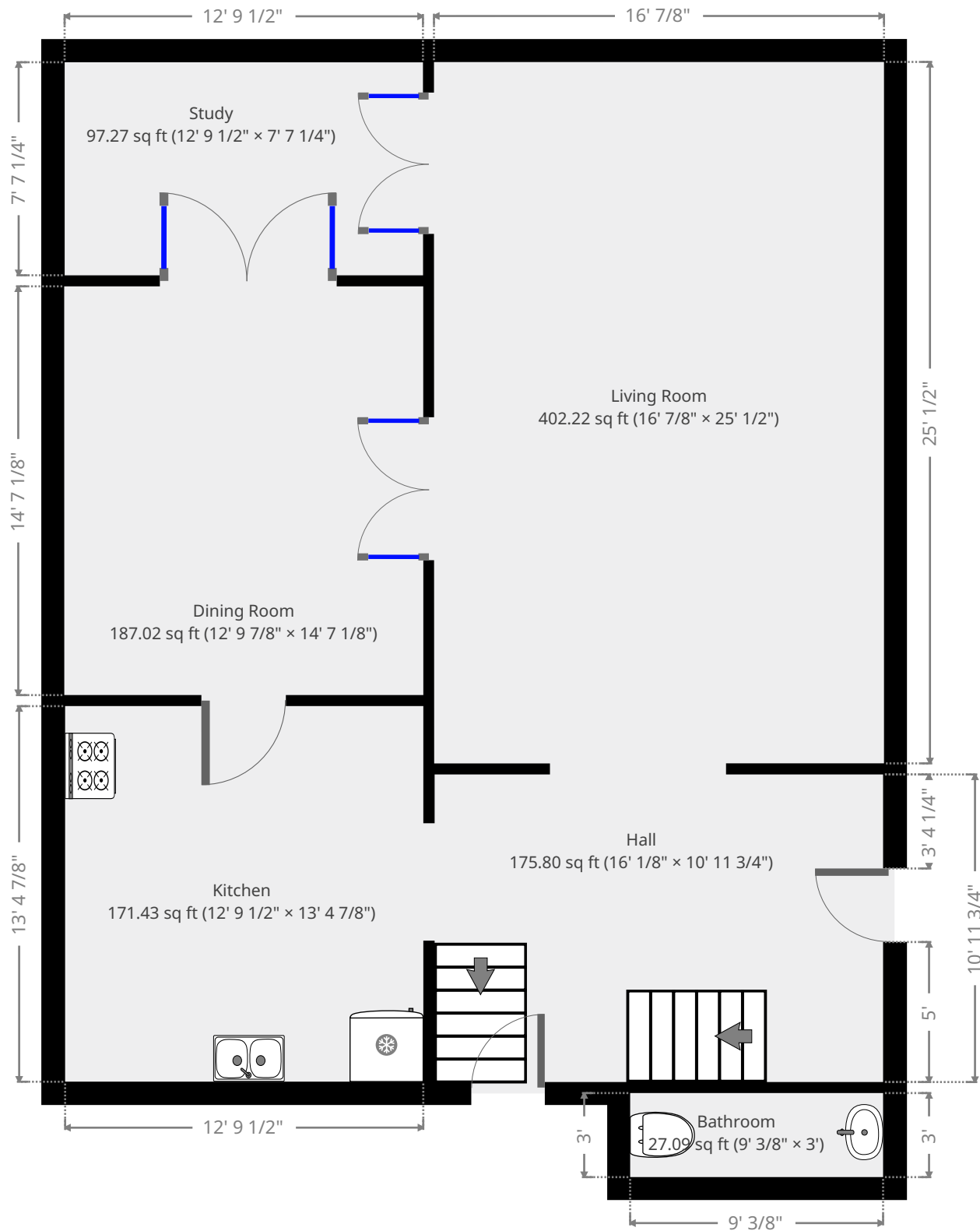
706 Broadway Street, Marysville, Kansas, United States 66508



## Statistics

Area: 1211 sq ft  
1 Floor  
0 Bedroom  
0 Bathroom  
1 Bathroom

## Ground Floor



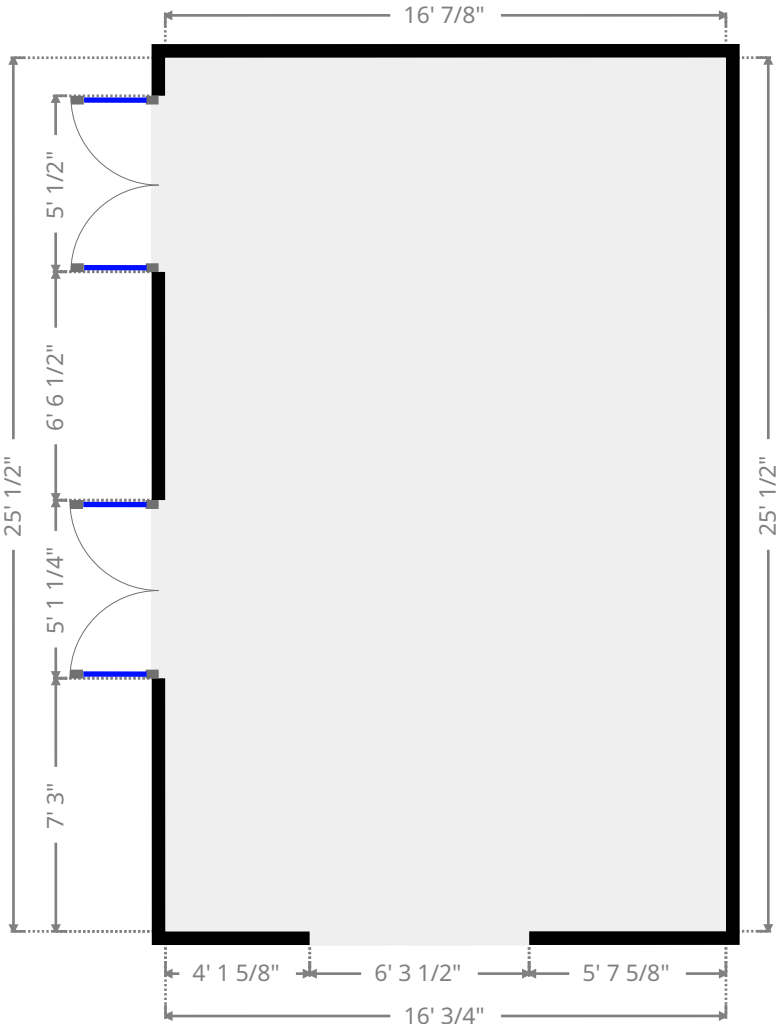
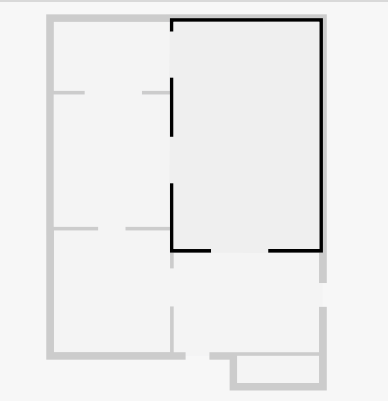
THIS FLOORPLAN IS PROVIDED WITHOUT WARRANTY OF ANY KIND. SENSOPIA DISCLAIMS ANY WARRANTY INCLUDING, WITHOUT LIMITATION, SATISFACTORY QUALITY OR ACCURACY OF DIMENSIONS.

# 1408 Jenkins

706 Broadway Street, Marysville, Kansas, United States 66508

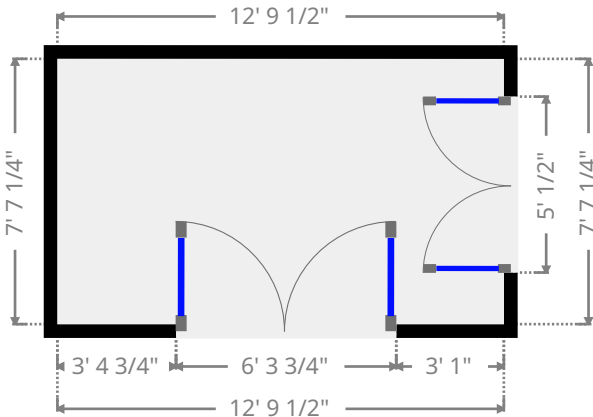
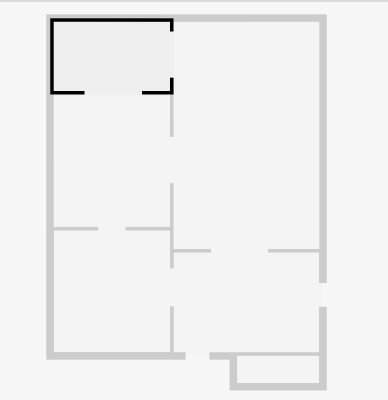
## Living Room

Width: 16' 7/8"  
Length: 25' 1/2"  
Area: 402.22 sq ft  
Perimeter: 82' 2 1/2"



## Study

Width: 7' 7 1/4"  
Length: 12' 9 1/2"  
Area: 97.27 sq ft  
Perimeter: 40' 9 1/2"

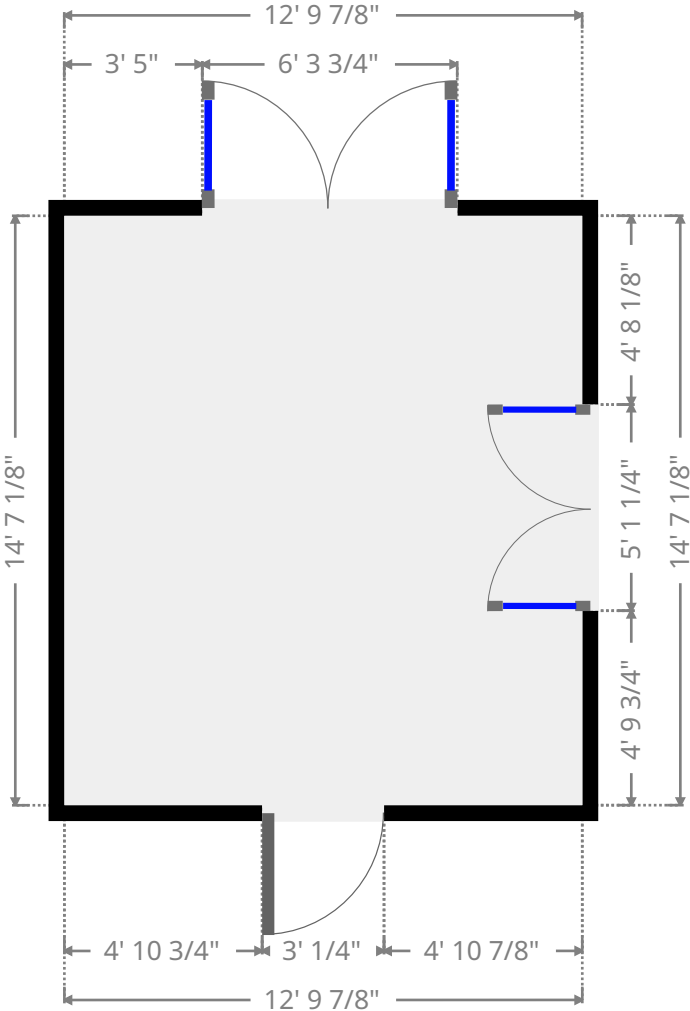
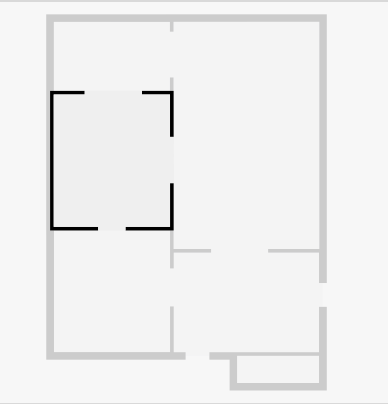


# 1408 Jenkins

706 Broadway Street, Marysville, Kansas, United States 66508

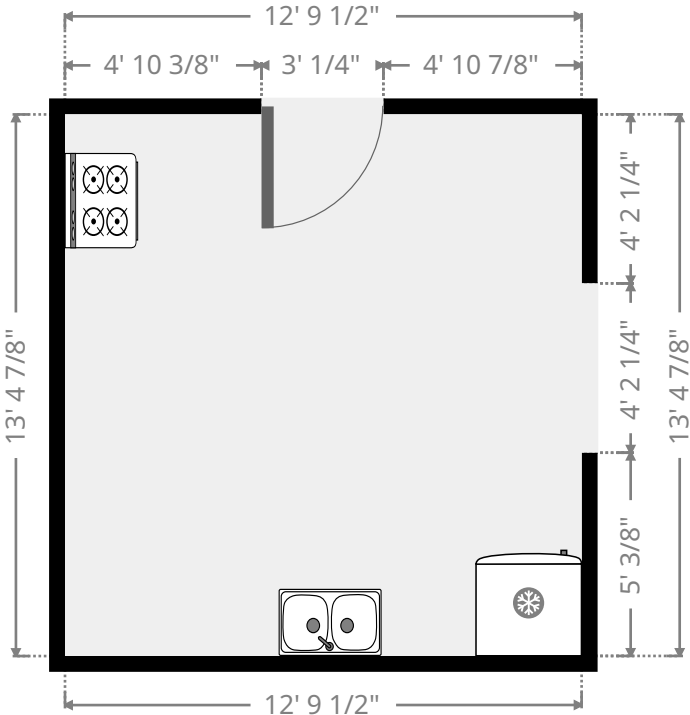
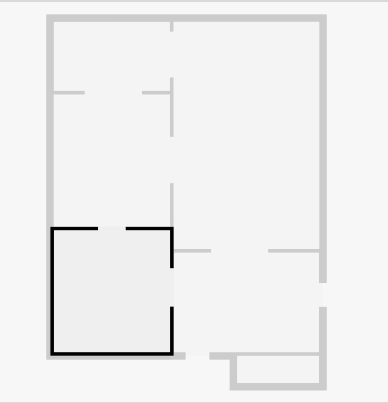
## Dining Room

Width:	12' 9 7/8"
Length:	14' 7 1/8"
Area	187.02 sq ft
Perimeter	54' 9 3/4"



## Kitchen

Width:	12' 9 1/2"
Length:	13' 4 7/8"
Area	171.43 sq ft
Perimeter	52' 4 5/8"



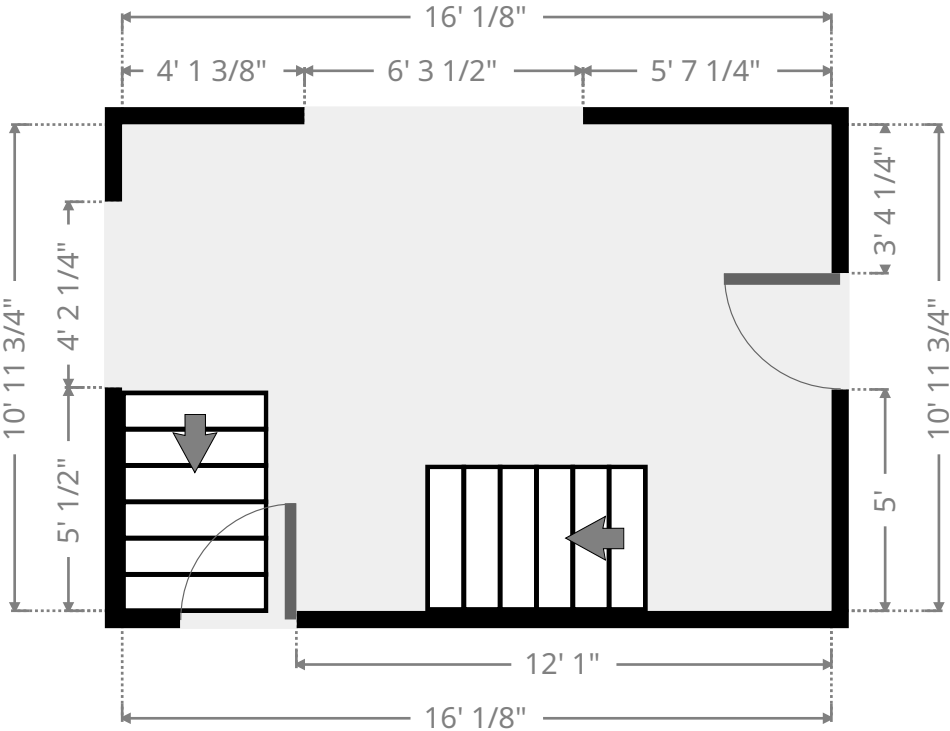
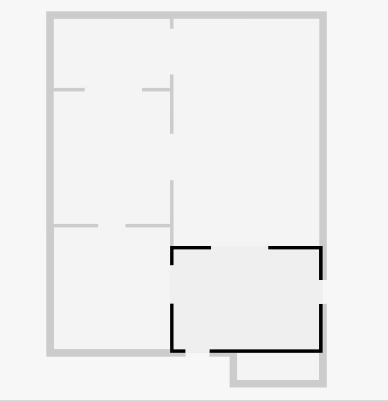
THIS FLOORPLAN IS PROVIDED WITHOUT WARRANTY OF ANY KIND. SENSOPIA DISCLAIMS ANY WARRANTY INCLUDING, WITHOUT LIMITATION, SATISFACTORY QUALITY OR ACCURACY OF DIMENSIONS.

# 1408 Jenkins

706 Broadway Street, Marysville, Kansas, United States 66508

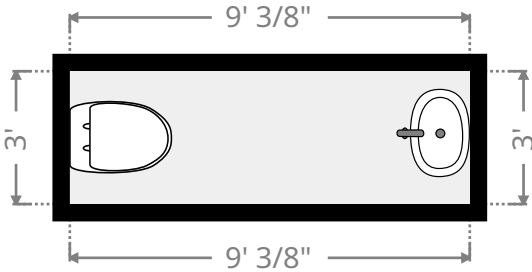
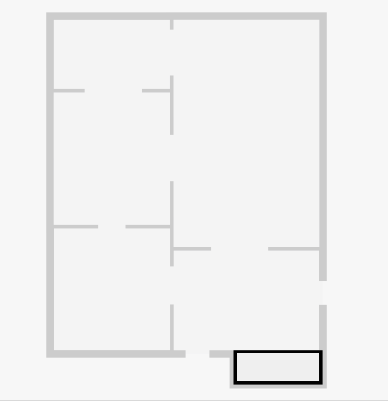
## Hall

Width:	10' 11 3/4"
Length:	16' 1/8"
Area	175.80 sq ft
Perimeter	53' 11 3/4"



## Bathroom

Width:	3'
Length:	9' 3/8"
Area	27.09 sq ft
Perimeter	24' 3/4"



THIS FLOORPLAN IS PROVIDED WITHOUT WARRANTY OF ANY KIND. SENSOPIA DISCLAIMS ANY WARRANTY INCLUDING, WITHOUT LIMITATION, SATISFACTORY QUALITY OR ACCURACY OF DIMENSIONS.



# 1408 Jenkins

706 Broadway Street, Marysville, Kansas, United States 66508



Plan

- Author: vallery
- Plan creation date: 2020-05-17
- Price: 85000